

SWAMI ATMANAND GOVERNMENT ENGLISH SCHOOL
PUMPHOUSE KORBA (C.G.)

E-MAGAZINE (JULY 2022)



VISION :

Nurturing A Mindset for Excellence with Universal Human values.

A^BC

MISSION :

To Develop A Creative Skill based learning Environment where our students fill motivated to discover their potential, Scientific Temperament, Aim High , Be Responsible and Caring Citizens with Sensitive towards their Community and Society there by Sustaining Peace and Harmony.

GOALS :

- Excellent Cognitive Development .
- Development of Inherent Quality of Students .
- Priority of Moral Education



TABLE OF CONTENTS

- ❑ PLANTATION DAY
- ❑ FORMATIVE ASSESSMENT I
- ❑ NO PLASTIC CAMPAIGN
- ❑ GURU PURNIMA CELEBRATION
- ❑ BOOK DISTRIBUTION ON GURU PURNIMA
- ❑ BEST OUT OF WASTE
- ❑ SELECTED FOR PRATIBHA SAMMAN YOJANA IN DISTRICT LEVEL
- ❑ HARELI CELEBRATION
- ❑ NICLER TEST
- ❑ SCOUT & GUIDE RALLY
- ❑ PRACTICALS



“WE STRIVE FOR PROGRESS
NOT PERFECTION.”

— SAGES PUMPHOUSE KORBA

PLANTATION DAY



FORMATIVE ASSESSMENT -1



NO PLASTIC CAMPAIGN



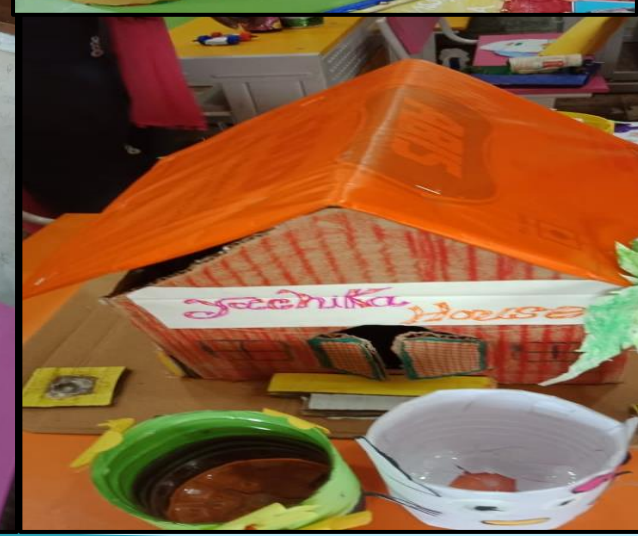
GURU PURNIMA CELEBRATION



BOOK DISTRIBUTION ON GURU PURNIMA



BEST OUT OF WASTE BY PRIMARY SECTION



BEST OUT OF WASTE BY MIDDLE SECTION



SELECTED FOR PSY ESSAY WRITING IN DISTRICT LEVEL.



HARELI CELEBRATION



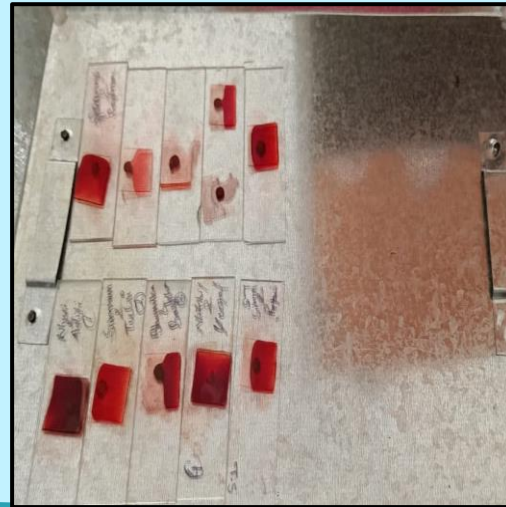
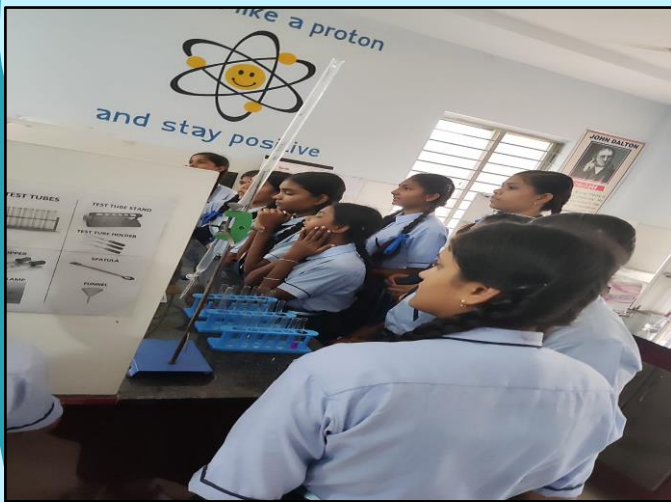
NICLER TEST RUN CONDUCTED THROUGH NIC APP



SCOUT & GUIDES RALLY ON VANMAHOTSAV



PRACTICALS



THANKYOU!

